



Karawara Public Open Space Master Plan + Collaborative Action Plan

VISION: *'working together to strengthen Karawara's' public open space and community*

14/08/2015

PROJECT PRINCIPLES:

BUILDING ON KARAWARA CHARACTER

Retain, enhance and actively build upon local spatial character attributes and seek to build upon the growing community capacity (pride)
'its about the people, not about the fences... we need to change the culture'

CONNECTIVITY

Seek to retain and enhance existing important linkages throughout Karawara and to adjoining suburbs...

AMENITY

To incorporate amenity that reflects the landscape character and offers diversity of multiuse areas, to foster community interaction...

SAFETY AND SECURITY

Continue to build upon developing a safe and welcoming environment

**Karawara Public Open Space Master Plan
+ Collaborative Action Plan 2013 Findings
Report**

Prepared by:



UDLA

Suite 1A, 3 - 5 Josephson St,
Fremantle,
6160

P: (08) 9336 7577

W: www.udla.com.au

Contact: fiona@udla.com.au
greg@udla.com.au



CoDesign Studio

96 Pelham Street
Carlton
3050

P: +613 9348 2776

W: www.codesignstudio.com.au

Contact: kate.ferguson@codesignstudio.com.au

Prepared for:



City of South Perth

Cnr Sandgate Street and South Terrace
South Perth
6151

P: (08) 9474 0745

W: www.southperth.wa.gov.au

Contact: emmetb@southperth.wa.gov.au

DOCUMENT STATUS

Rev. No.	Author	Reviewer		Approved for Issue		
		Name	Signature	Name	Signature	Date
A	UDLA / CoDesign Studio	FH, GG		GG FINAL DRAFT - CLIENT REVIEW		01/07/2013
B	UDLA / CoDesign Studio	FH, GG		FH - CoSP REQUEST FOR FINAL		14/08/2015



Contents Page

Acknowledgement	4	Precinct Specific Outcomes	73
PART A - DESIGN PROCESS	7	Suburb-wide Outcomes	75
Introduction	8	Evaluation	77
Research	14	ANNEX B - MASTER PLAN ENGAGEMENT PROCESS & DOCUMENTATION	79
Project Methodology & Findings	17	Master Plan Process	81
Key findings	21	Workshop 1 - Opportunities and directions and key findings	83
Karawara Public Open Space Master Plan 2013	23	Workshop 2 - Sketch Design Options	84
PART B - COLLABORATIVE ACTION PLAN	25	Workshop 3 – Draft Master plan (Collaborative Action Plan)	91
Collaborative Action Plan	26	ANNEX C - SUPPORTING DATA	93
ANNEX A - COMMUNITY ENGAGEMENT PROCESS & DOCUMENTATION	59	Community voting	94
Engagement Process	60	Mapping activity	96
Engagement Activities	63	Trevor the ideas tree	97
Mapping	65	Photo bingo	98
Voting and residents' ideas for amenities	67	Participatory design	112
Photo bingo	69		
Trevor the Ideas Tree	71		
Children's Table & Participatory Design	71		



Acknowledgement

The project team would like to acknowledge the input by the following residents, stakeholders, City of South Perth representatives & CoDesign Studio Volunteers. Again, thank you for your valued contribution.

Karawara residents;

- Mary Benson Resident
- Audrey Francis Resident
- Susan Gazat Resident
- Irene Harper Resident
- Warner Hooper Resident
- David Hooper Resident
- Jason Hughston Resident
- Rosie Kiceit Resident
- Joey Meiers Resident
- Sheila Peers Resident
- Margaret Robinson Resident
- Carol Roe Resident
- Izzie Vedkara Resident
- Kevin Trent Councillor
- Colin Cala Councillor / Resident
- Peter Howat Councillor / Resident

Broader community of Karawara

Aboriginal Focus Sessions;

- Dena Gowers Aboriginal engagement
- Garry Gower Aboriginal engagement
- Honey Webb Curtin Primary School/
Aboriginal engagement
- Briggett Michael Aboriginal engagement
- Mark Smith Aboriginal engagement
- James Webb Aboriginal engagement
- Ariane Webb Aboriginal engagement
- Dorothy Winmar Aboriginal engagement
- Kerry-Ann Aboriginal engagement
- June Web Aboriginal engagement

Stakeholders;

David McLaughlin	Department of Housing
David Lock	Inclusive Community Action Group
Diane Cheong	Neighbourhood Watch
Peter Cope	Curtin University Housing Services
Stuart Hawkins	Curtin University
Andre Lee	Curtin University
Yashveen Sunnassee	Curtin University
Les Bloxham	Erica Underwood House
Lana Dewar	Guild House Student Accommodation Manager
Mark Murray	Student
Steve Banks	WA Police
Nick Berragan	WA Police
Ash Goy	WA Police
Vicki Morrell	Southcare
Olive Wright	Meath Care
Rebekka Jarvis	The Gowrie
Tonia Westmore	The Gowrie
Albert Sertorio	Waterford Plaza Centre Management
Ross Metherell	Collier Park Golf Course
Daron Crothers	Lifestream Church
Jess Radny	Lifestream Church

City of South Perth representatives;

Emmet Blackwell	City of South Perth
Kellie Bennett	City of South Perth
Karen Lancaster	City of South Perth
Danielle Cattalini	City of South Perth
Julia Robinson	City of South Perth
Renee Darbyshir	City of South Perth
Vicki Lummer	City of South Perth

CoDesign Studio;

Led by;	
Kate Ferguson	CoDesign Studio

Volunteer Team:

Tina Askam	CoDesign Studio
Diana Avery	CoDesign Studio
Jackson Bellchambers	CoDesign Studio
Brendon Bourke	CoDesign Studio
Michelle Bui	CoDesign Studio
Adrian Cagnana	CoDesign Studio
Mimi Cho	CoDesign Studio
Robyn Creagh	CoDesign Studio
Tara Ell	CoDesign Studio
Louise Hrurukvit	CoDesign Studio
AJ Patience	CoDesign Studio
Amy Quach	CoDesign Studio
Hanna Torii	CoDesign Studio
Lee Yang Yang	CoDesign Studio
Eve McLachlan	CoDesign Studio/UDLA



PART A - DESIGN PROCESS





Figure 1: Context Plan



Figure 2: Karawara suburb

Introduction

Background

It is understood that the Karawara Community of South Perth is a unique and significant local example of the Radburn planning design philosophy. As such, it affords residents a series of extensive open space corridors, clear separation of pedestrian and vehicular modes of transport encouraging interface between residential lots and the adjoining open space. The initial intent of the Radburn philosophy in 1929 was to encourage a feeling of openness and engagement among residents as a community. However, shifting social trends since its inception have begun to reject some of the original Radburn methodologies, i.e. In Australia the need to feel more secure through fencing of lot boundaries limiting space visual permeability or passive surveillance. Therefore there was a need to address the feeling of community safety, a result possible through application of CPTED (Crime Prevention Through Environmental Design).

Our team understand that the residents of Karawara have been consulted extensively and the results appear very encouraging. It is equally encouraging to understand that the residents are also passionate about further contributions to the spatial Master Planning process, a partnership which our team are committed to fostering. The formation of a Master Plan resulting from these exchanges will ensure the most appropriate approach to Karawara open space revitalisation.

The Master Plan requested by the City of South Perth was required to address a myriad of spatial and social concerns. As these matters are as complex as the social environment they are designed to manage, the following list is by no means exhaustive, however, more indicative of a philosophy of place making and touches on some of the more salient points for consideration:

- The Master Plan was to address future works within the scope boundary and therefore, must be very forward thinking;
 - All interested parties require a voice within the Master Plan design process, including, residents, indigenous elders and councils, and stakeholder corporations and organisations;
 - The consultant was required to become a proactive part of the team that already exists within the City of South Perth organisational structure. Therefore, communication and open-mindedness in conjunction with a team-based approach was critical to the success of the project.
 - A highly organised and focused series of community communication and facilitated engagement workshops were required in order to enable every voice to be heard and empower the community through the Master Plan design process.
 - Existing plans and ancillary documents are required to be considered in order to inform the new Master Plan of the history of the area and the changing social and political environment over time. This will allow a firm understanding of the future trajectory of the open space objectives.
- Proactive development of community ownership throughout the neighbourhood and open space networks;
 - Allowance for recreational activity such as incorporation of nodes of activity along the pathways and incorporation of both active and passive social opportunities for community building and passive surveillance;
 - Increase in the local resident governance opportunities through collaboration and possible revitalisation of ARROK (former residence association of residence and rate payers of Karawara);
 - Application of ecologically sustainable development principles; and
 - Provision of suitable amenities for pedestrians, cyclists, picnickers, and recreation-seekers.

The development of a community engaged Master Plan along with a supporting collaborative community activation plan shall endeavour to provide a well-conceived matrix of social space programme, recreation, ecology, culture, art, and safety for the benefit of all residents and stakeholders.

Components of Master Plan that were to be carefully considered include (but are not at all limited to):

- Preservation and enhancement of appropriate existing public access links and coordination with existing neighbourhood amenities;
- Conservation of significant existing vegetation and other natural features;
- View Shed analysis and management within the open space network, particularly with regard to pruning practices and planting allowances;
- Continuation and further development of the unique Karawara sense of place;
- Incorporation of opportunities for art and sculpture, either indigenous or otherwise, in order to draw the community closer together and create ownership among residents and social groups;

LEGEND

- Waterford Plaza (Commercial)
- Student Residence
- Low density Radburn (Karawara Greenways)
- Low density contemporary infill (Central Redevelopment Area)
- Medium density Radburn (Karawara Village Greens)



Figure 3: Karawara precinct plan



Figure 4: Low density Radburn (Karawara Greenways)



Figure 5: Low density contemporary infill (Central Redevelopment Area)



Figure 6: Medium density Radburn (Karawara Village Greens)

Figure 3. illustrates how Karawara is defined by distinct precinct areas including; Student Housing, Waterford Plaza Retail Hub and the residential areas. The residential areas are further defined by housing and planning type i.e. low density Radburn, low density contemporary infill, medium density Radburn.

The student housing, Curtin Student Guild Housing and Erica Underwood House have strong connection to Curtin University on the opposite side of Kent St (Refer Figure 3).

The close affiliation with the University means this area operates as its own identity, separate from the rest of Karawara.

Also within the suburb boundary is Waterford Plaza, which is the retail / commercial hub in Karawara. Waterford Plaza has a strong internal focus creating a main street style thoroughfare, which is a shared space. This internal centre is the focal activity hub of the retail precinct, however provides limited, or seemingly backdoor, service area connection to Walanna Drive and Karawara. This presents an opportunity to improve connection with Karawara residential area, as well as opportunity to screen building service areas adjacent to Walanna Drive.

During the site walk it was observed that the residential portion of Karawara comprises three distinct areas, which have different planning configurations, spatial arrangements, diversity and demographics. These three residential precincts became the main focus of the engagement strategy + public open space master plan, as well as, improving connection and integration of the



Objectives

Through considerable wide-ranging pressures it is now subject to require active management and an agreed framework within which long-term planning and revitalisation decisions can be made to address future spatial design opportunities that specifically relate to raising social capital within a community. In this case a community can be simply defined as a diverse group of people living and sharing a space defined by a municipal boundary or precinct.

With this in mind, the project team including the City of South Perth, Co Design and UDLA recognised that appropriate design engagement was vital to facilitate and drive the success of the project. A diverse cultural environment such as Karawara requires sensitive consultation to ensure that a great number of views were able to be heard, discussed and incorporated as reasonably as possible through a design facilitation process. The inclusive design process encouraged all residents to feel empowered and proud of their input into preparing the Karawara Public Open Space Master Plan and ultimately ownership over the priority action plan outputs.

Through an extensive engagement and facilitated design process, the Karawara Public Open Space Master Plan + Collaborative Action Plan was developed by responding to the agreed project vision and project principles. The Action Plan focuses on providing numerous implementation opportunities (including 'quick wins') which focus to build upon Karawara's unique character and community pride.

The Karawara Collaborative Action Plan demonstrates an inclusive master planning model that aims to;

- Empower all participants including stakeholders, residents, NGO's and local interest and cultural groups;
- Address many and varied complex site specific matters/concerns;
- Provide unique outcomes addressing Karawara's unique sense of place; and
- Develop a model of contemporary ownership and governance.

Figure 7: (Opposite page) Participants place ideas on 'Trevor the ideas tree' during Workshop 2

The project team recommend that a similar simple Action Plan engagement process be undertaken with the Karawara community and stakeholders every 2-3 years. The aim of this Action Plan engagement process would be to reaffirm the Master Plan vision and take stock, or prioritise Collaborative Action Plans undertaken, underway or still to be undertaken.

It is important that this engagement process is a positive occasion that does not continually go over old concerns, however has an aim to continually revitalise, engage and update the collaborate action plans, especially as projects mature or community priorities are seen to change and / or develop. All actions must respond to the agreed project vision and project principles. This is how outcomes will remain unique and address the Karawara needs. Summary of project vision and project principles;

Vision;

'working together to strengthen Karawara's' public open space and community

Project Principles;

Building on Karawara character

Retain, enhance and actively build upon local spatial character attributes and seek to build upon the growing community capacity (pride) 'its about the people, not about the fences... we need to change the culture'

Connectivity

Seek to retain and enhance existing important linkages throughout Karawara and to adjoining suburbs...

Amenity

To incorporate amenity that reflects the landscape character and offers diversity of multiuse areas, to foster community interaction...

Safety and security

Continue to build upon developing a safe and welcoming environment

Research

Project inception

During the research phase of the Master Plan process the project team, UDLA + CoDesign Studio reviewed and collated background information on Karawara including;

- previous consultation material;
- desktop mapping of existing features and Karawara land uses of;
- review demographics;
- document interest and community groups;
- document local public assets, amenity and facilities; and
- undertake walk with the project team (City of South Perth, CoDesign & UDLA) to discuss site values, concerns and expectations.

The project inception phase provided strong understanding of the existing Karawara spatial and social fabric, a framework to inform the Master Plan engagement process.



Karawarra Community Vision Community Consultation

Summary of Community Development Outcomes

City of South June 2010

Figure 8: Karawarra Communities Vision, Summary of Community Development Outcomes, City of South Perth, June 2010

Acknowledgement of previous study's

In addition the project team acknowledged considerable previous consultation that had already been undertaken, including most recently 2009 community consultation and PAW closure consultation in 2012. Again the objective was to inform, however not to cover old ground, rather build upon previous engagement and ensure the feedback and values of the Karawara are synthesised into clear directions and implementation outcomes.

UDLA + CoDesign Studio acknowledge the following list of reports/studies which previous material and findings has been drawn upon to advance the Master and Action Planning process, including:

- Public Open Space Strategy 2012, City of South Perth;
- Public Open Space Resident Survey January 2012, City of South Perth;
- Public Open Space Observation Findings Report, City of South Perth;
- Public open Space Issues and Challenges Report 2012, City of South Perth;
- South Perth Bike Plan 2012/2017, City of South Perth;
- Karawara Community Vision Community Consultation | Summary of Community Development Outcomes 2012, Creating Communities Australia;
- Aboriginal Engagement Strategy 2012, City of South Perth;
- Community Consultation 2012 The Gowrie. Notes provided by The Gowrie;
- City of South Perth Council Meeting Minutes: 28th August 2012; and
- Strategic Direction 3 : Housing and Land Use 10.3.1 Closure of selected portions of Public Open Space (POS) Reserves and Pedestrian Access Ways (PAW's) within Karawara.

Desktop directions

Our team acknowledges the recent consultation undertaken by Creating Communities Australia in 2009, 'Karawara Community Vision Community Consultation'. From this consultation and report there was a recommendation that the City of South Perth undertake a whole place management approach which aims to improve physical environment and utilise community development strategies to address crime, safety, the suburbs appearance and social wellbeing.

The report summarises the underlying design of the stakeholder participants is to;

'Retain and preserve the unique character of Karawara and the open space network, whilst undertaking the necessary design changes and improving the functionality, presentation and safety of Karawara'.

The report acknowledged that further consultation is required with the Aboriginal Community.

In summary, the report provided 19 detailed recommendations illustrated Figure 5. covering both physical invention and increased community initiatives to support community cohesion.

These recommendations directly aligned with the process and findings of the Karawara Collaborative Action Plan, as this document strives to provide a practical, robust and appropriate framework for key priority Actions (recommendations) to be implemented and achieved.



Figure 9: Engagement phase - Workshop 3



Figure 10: Voting activity during engagement phase



Figure 11: Mapping Activity

Project Methodology & Findings

Community engagement

During the Inception site walk, it was observed that Karawara has 3 distinct residential precincts e.g. the medium density Radburn planned precinct (The Karawara Village Greens), The low density contemporary residential infill precinct (Central Redevelopment Area) and the open low density Radburn planned precinct (Karawara Greenways).

Therefore to ensure the team understood opportunities and challenges of each precinct, three informal open space workshops were proposed. A temporary pop up discussion trail was installed through the Karawara suburb to advertise these events, generate interest and provoke thought as to how the public open space is being used.

Due to the diverse demographic of Karawara, 'two drop in events' were also run on the back of City of South Perth events; Fun Fiesta Day and Multicultural Film Festival. This was viewed as an additional opportunity to capture a wide Karawara audience, as well as, visitors who frequently come to the area.

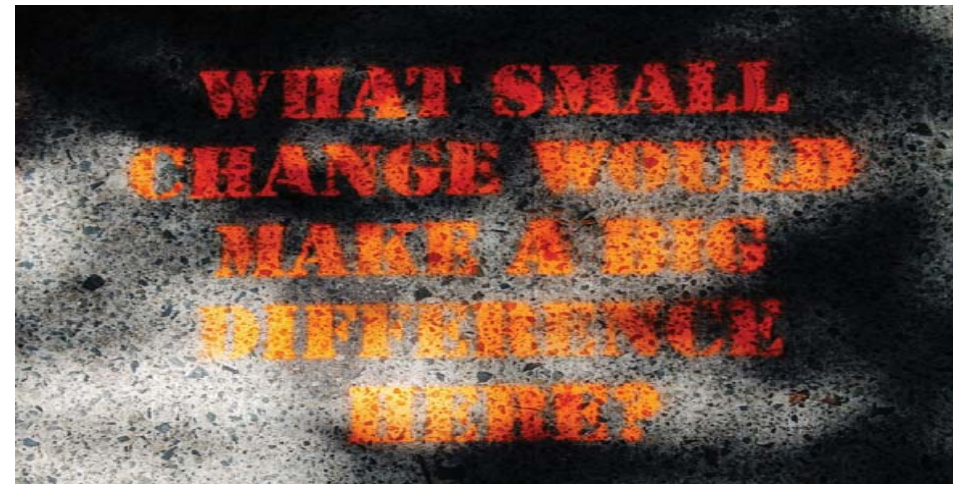


Figure 12: (Above Left) Discussion Trail



Figure 13: CoDesign volunteers temporary installation of discussion trail



Masterplan Engagement (Including Aboriginal Engagement)

The master plan workshop were attended by a group of 12 to a final group of 25 community stakeholders, residents and City of South Perth representatives. This group is referred to throughout the report as the Master plan Reference Group.

Concurrently run, in conjunction with the Master plan Workshops were 2 focus sessions with the local Noongar (Aboriginal) Community (NC) to ensure their voice, values and concerns were represented throughout the process.

The purpose of the Master plan Workshops is to guide the Master plan Reference through a facilitated design process. Over three workshops two way discussions include;

- 1) Opportunities & Directions;
- 2) Sketch Design Options;
- 3) Draft Master plan;

Figure 14: (Left) CoDesign volunteer de-brief session between the engagement phase and master plan Workshops

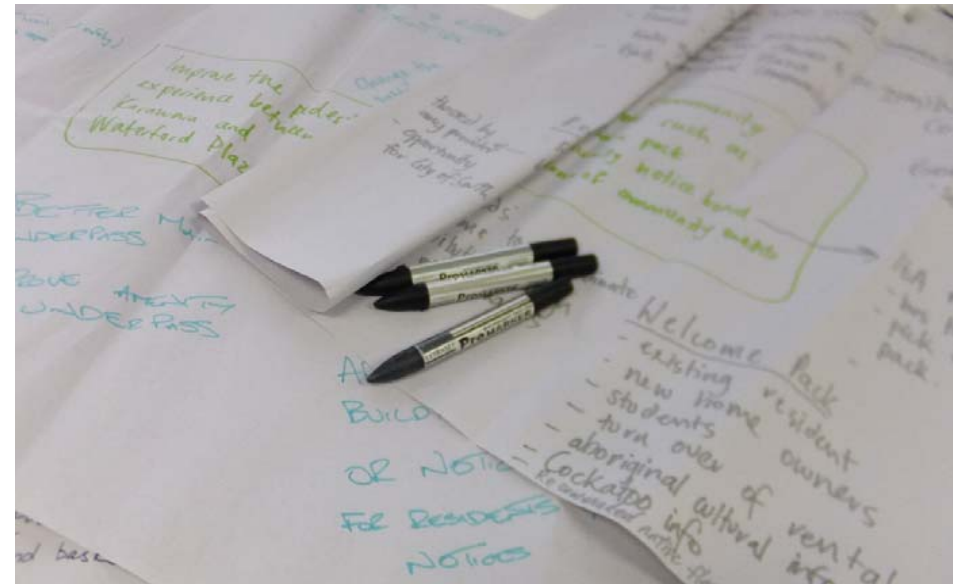


Figure 15: Example of draft collaborative action plan brainstorming during Workshop 3

Project Principles

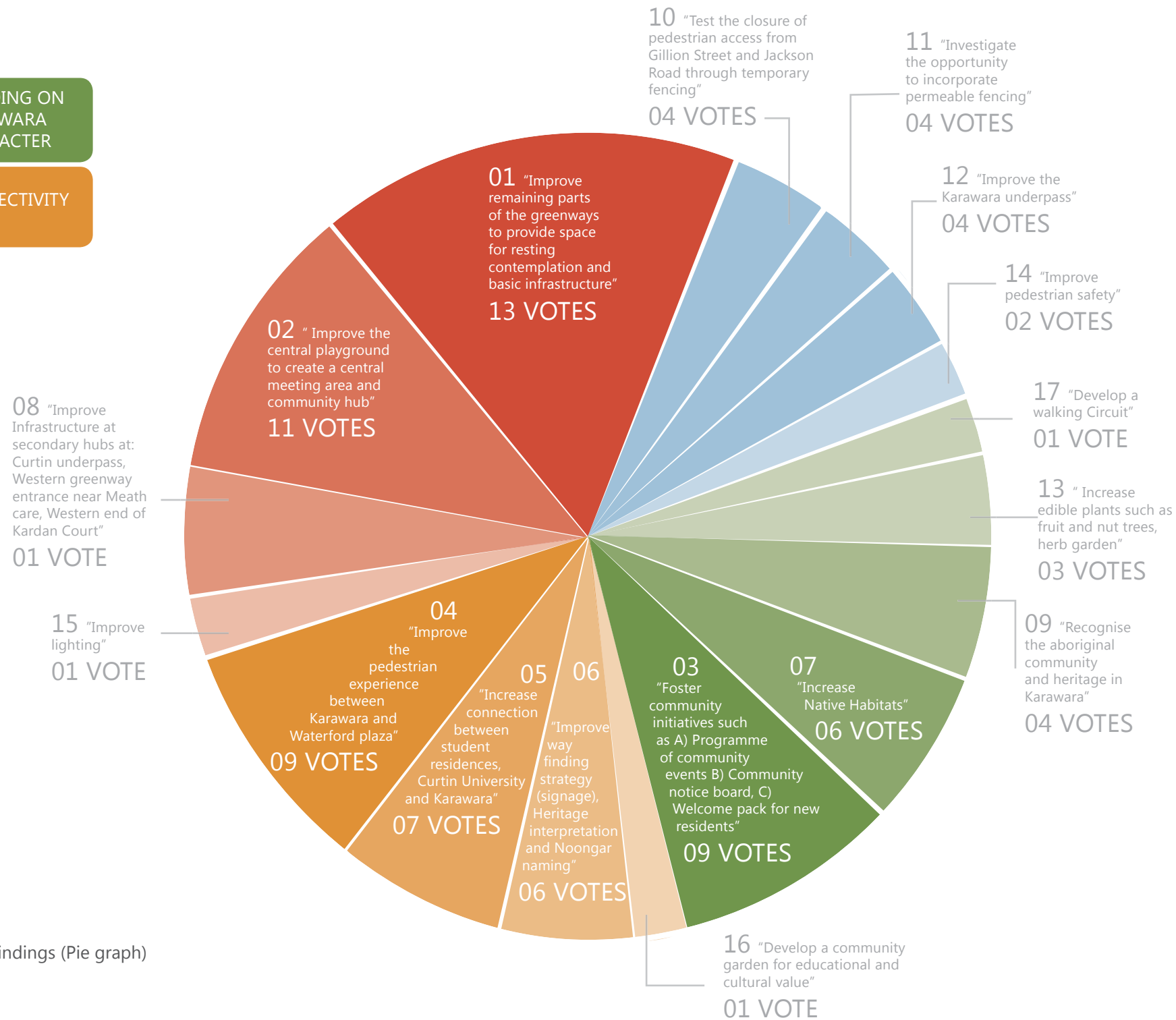


Figure 16: Summary of key findings (Pie graph)

Key findings

The community engagement and master planning process provided key findings and feedback and these were documented within Figure 15: - Summary of Key Findings.

From the key findings and direction the Master and Action Plan principles were grouped into 4 key categories;

1. Building on Karawara character
2. Amenity
3. Safety and Security
4. Connectivity

These findings have been translated into the Karawara Public Open Space Master Plan and distilled into individual projects for the Karawara Collaborative Action Plan 2013

KARAWARA PUBLIC OPEN SPACE MASTERPLAN

'working together to strengthen Karawara's' public open space and community character'



Figure 17: Karawara Open Space Master Plan 2013

Karawara Public Open Space Master Plan 2013

PROJECT PRINCIPLES:

Building on Karawara Character

Retain, enhance and actively build upon local spatial character attributes and seek to build upon the growing community capacity (pride)... "It's about the people, not about the fences... we need to change the culture"

Following discussing possible spatial and social amenity options for Karawara the agreed directions of the community engagement process and the master plan workshops have been illustrated within the Karawara Public Open Space Master plan Figure 14.

As mentioned within the introduction the agreed vision statement of the Karawara Public Open Space Master Plan is;

'working together to strengthen Karawara's' public open space and community character'.

It is important to understand that the Master Plan and Collaborative Action Plan 2013 outcomes are achieved through a range of ultimately small interventions. These intervention or small projects on the whole aim to build upon the local character with key focus on the following:

- Increased amenity within the central playground;
- The provision of meeting, rest and contemplation points throughout the central greenways;
- Accentuating existing and proposed pedestrian linkages to agreed destination points within and around Karawara;

Amenity

To incorporate amenity that reflects the landscape character and offers diversity of multiuse areas to foster community interaction

Connectivity

Seek to retain and enhance existing important linkages throughout Karawara and to

Safety & Security

Continue to build upon developing a safe and welcoming environment

- Promoting security within all open spaces; and
- Reaffirming positive open space opportunities that can be provided from Radburn open space principles.

In addition, key findings also acknowledged and built on existing community pride. This includes acknowledging social statistics like Karawara having one the lowest crime rates for break in and theft in the City of South Perth. From understanding other positive Radburn precedents such as the Crestwood Estate, the Karawara public may gain the confidence to claim greater ownership over public open space, especially the areas adjoining residential lots.

In summary, the Karawara Public Open Space Master Plan provides an overview of the many complexities that make up the existing spatial and social fabric. Through the Collaborative Action Plan, the master plan is then divided into manageable, defined tasks. The agreed tasks can then be implemented or facilitated by a collaborative team including City of South Perth, stakeholders and the Karawara community members.



TINA
volunteer

PART B - COLLABORATIVE ACTION PLAN



Vision:

'working together to strengthen Karawara's public open space and community character'

Project principles:

BUILDING ON KARAWARA CHARACTER

Retain, enhance and actively build upon local spatial character attributes and seek to build upon the growing community capacity (pride)
'its about the people, not about the fences... we need to change the culture'

CONNECTIVITY

Seek to retain and enhance existing important linkages throughout Karawara and to adjoining suburbs...

AMENITY

To incorporate amenity that reflects the landscape character and offers diversity of multiuse areas, to foster community interaction...

SAFETY AND SECURITY

Continue to build upon developing a safe and welcoming environment

Collaborative Action Plan

Objectives

The purpose of the Karawara Collaborative Action Plan is to provide the Community and Stakeholders in facilitation with the City of South Perth an agreed project list that can be collectively implemented. The implementation of each project would be based on agreed timing and priorities.

It also may require specialists to be part of these teams, either in-house from the City of South Perth or external consultants/contractors to aid in the design and implementation of each project.

The success of these actions (projects) depend on the level of joint coordination between the City of South Perth and community through collective participation, engagement and accountability, each at their respective capacity.

At the agreed time and opportunity it is hoped that the individual factsheets can be provided to the appropriate interested parties who then facilitate coordination of implementing the action.

This inclusive master and action planning model aims to empower all participants to be actively involved, take ownership and contribute to personally building Karawara's local character. This multi-layered approach aims to cater for many personalised outcomes, that are diverse and become unique to people and place.

All actions must respond to the agreed project vision and project principles. This is how outcomes will remain unique and address the Karawara needs.

Karawara Implementation Team (KIT)

To coordinate the stakeholder and community collaborative action plan our team recommend the establishment of a Karawara Implementation Team (KIT). KIT should include representatives from City of South Perth, associated stakeholder groups, community bodies, residents to reflect the broader demographic of Karawara with responsibilities to advise on and coordinate the agreed outcomes across each project.

The success of the KIT will depend on inclusive engagement, accountability and the responsibility that goes with being able to contribute. To maximise motivation over time, ensure 'community champions' are acknowledged and supported. These roles should also be shared to ensure resources aren't exhausted (burn't out).

Residents who are not able to join the group, are encouraged to attend meetings, participate in discussions, contribute in supporting roles. There is an opportunity for KIT to develop partnerships and support from local organisations including:

- The Gowrie;
- Lifestream Church;
- Meath Care;
- Moortidj Keila; and,
- Waterford Plaza

Each resident of the Karawara community has a voice, and every person can make a difference by working together to solve community problems.

The Collaborative Action Plan is made up of 14 key priority actions, which are directly aligned with the key findings of the design process.

Each priority action has been developed into a factsheet. Each factsheet includes a brief summary of the following:

- The project background / existing condition;
- The relevant engagement method (Previous consultation, engagement process, master plan workshops & aboriginal focus sessions);
- A proposed timeline; and
- Key design recommendations.

The factsheet also nominates possible partnerships and accountability including which party may be best responsible for facilitating project direction and whom input is required from to commence the implementation process.

Project Guide

Number refers to priority of the project calculated from votes

Context plan

Coloured circles indicate relevant location of project

Relevant project principle


Border colour corresponds to relevant project principle

Relevant department within the City of South Perth
Contact for response on the project

Collaborative Action Plan | Amenities |
 Project 1 | Explanation of the project

Project 1 :
Explanation of the project

Brief
Project brief including background description



Methodology
Recommended scope of works and design process

Number of symbols relates to the timeline of the relevant priority

Short term	🕒	🕒	🕒
Medium term	🕒	🕒	🕒
Long term	🕒	🕒	🕒
Short-Medium term	🕒	🕒	🕒
Short - Long term	🕒	🕒	🕒
Medium - Long term	🕒	🕒	🕒

Accountability/ partnership

Facilitated by:

Partnerships:

Engagement Phase

Master Plan Workshop 🗑️

Timeline 🕒🕒🕒

Aboriginal Focus Session 🇺🇲

Previous consultation 🗑️

Symbol refers to whether or not the priority was mentioned in the given phase of the process

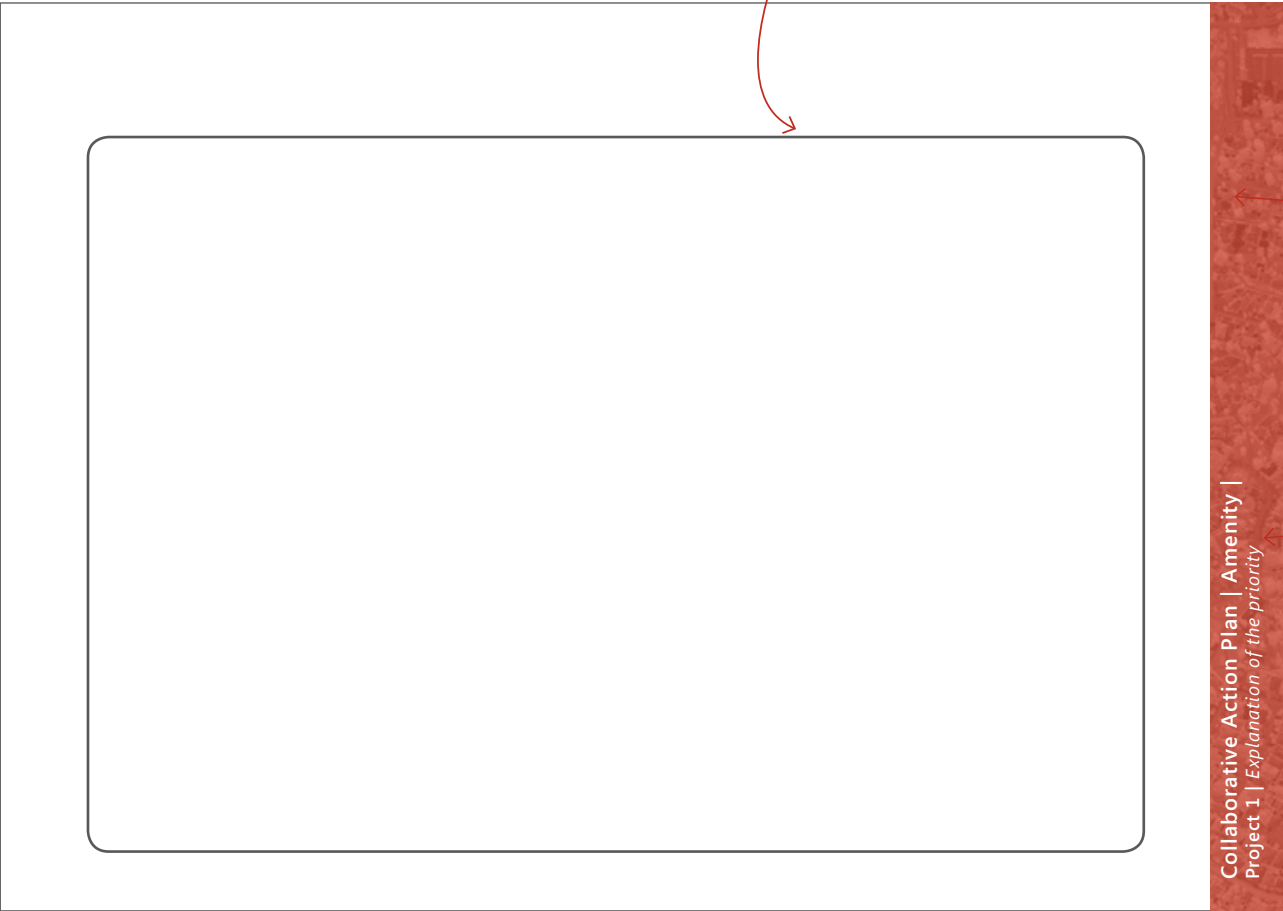
Mentioned 🗑️
Not mentioned 🕒

Symbols indicate if the priority was mentioned in:

Aboriginal Focus Session 🇺🇲
Previous consultation 🗑️

Example precedent photos relevant to certain action or recommendation

Map used to locate examples of recommendations and possible insertions



Border colour corresponds to relevant project principle

Collaborative Action Plan | Amenities |
Project 1 | Explanation of the priority

Relevant project principle

Vision;

'working together to strengthen Karawara's public open space and community character'.

Project Principle:

Amenity

To incorporate amenity that reflects the landscape character and offers diversity of multiuse areas, to foster community interaction...



Project 01 :

Improve greenways to provide space for resting, contemplation and basic infrastructure

Brief

Currently within the Karawara greenways illustrated within the adjacent context plan, there is limited amenity such as street furniture.

This project provides the opportunity to incorporate an agreed furniture and materials palette that reflects the landscape character, offers diversity within the multiuse areas, fosters community interaction and is appropriate to the spatial program e.g. not encouraging people to gather or linger close to private residential properties.

Methodology

1. Develop a standard materials and edge treatment palette. This palette should integrate theming and support the development of a Karawara vernacular. Appropriate edge treatments and materials should be agreed upon, then as implementation works are rolled out, the palette can be drawn upon as required. This should be agreed between the KIT and City of South Perth.
2. Provide and locate seating under existing trees at key points along the Greenways. Preferred seating described during the workshops is a park bench with back support, which is practical, robust and appropriate to the Karawara character.
3. Provide and locate basic amenity including drinking fountain, bin, dog bag facilities and small hardscape area.
4. Opportunity to incorporate and locate recreational activity areas such as, giant chess set or draughts set, community games.
5. Improve navigation and pedestrian experience through greenways with a series of way finding markers. (Refer to Key Priority 06)
6. Provide measures to prevent motorbikes or unwanted vehicles from entering the greenways.

Accountability / Partnership

Facilitated by:

City of South Perth:
Engineering Infrastructure
Landscape Architect

Input:

- KIT

Engagement Phase
Masterplan Workshop



Timeline



Example of low native planting along path to improve pedestrian experience



Example of sculpture and rest stop along path, with mulch under existing tree

Example Page

The following precedent images and indicative plan are illustrative suggestions to start your design investigation / discussion.

Please note, outcomes should respond to the project principles. This will ensure outcomes are appropriate and unique to Karawara.

Retain existing trees. Underplant with supplementary native planting / mulch to minimise maintenance and extensive lawn area

Opportunity for seating / small hardstand area

Supplementary public open space trees along public / private boundary and aligned with path network.

Tree should be underpruned to maintain viewlines



Figure 20: Example of amenity located in greenway



Example of possible motorbike barrier integrated into permeable fencing



Example of rest stop seating and hardstand



Example of a concrete bench and table with chess game on table top



Example of use of shady trees with mulch to dripline extent

Vision;

'working together to strengthen Karawara's public open space and community character'.

Project Principle:

Amenity

To incorporate amenity that reflects the landscape character and offers diversity of multiuse areas, to foster community interaction...



Project 02 :

Improve the central playground to create a central meeting and multi-use area

Brief

Through the engagement process it was strongly agreed that the central playground is to be developed into an active node within Karawara.

During all forms of engagement, there was strong reminiscence of the previous Fun Factory. Whilst it's acknowledged this can't be recreated, there is an opportunity to create a new hub that reflects the current community of Karawara.

The aim of this project is to transform the playground into a central meeting and multi-use area which reflects the diverse requirements of the Karawara community.

Methodology

It is suggested The City of South Perth / and or a consultant undertake a detailed design review of the central playground in collaboration with partners such as KIT, Curtin Primary School, Aboriginal community etc.

The design process should include:

- Site analysis
- Opportunities and directions mapping
- Concept Design

Design considerations for central playground:

- Build on the central playground (Kardan Circuit) by increasing amenity to ensure it caters for the whole community, including the diverse Karawara demographic and all age groups. It should act as a multi-functional space that brings together the community through different activity types.
- Increase amenity such as: BBQs; seating; shade structure; bike racks; basketball facilities; play equipment; fitness equipment; drink fountain; adult exercise facilities; possible pop-up workshops/café/community garden.
- The central area should act to link and connect key community destination points e.g. teen skate park, Gillon Lake, Waterford Plaza, the Gowrie etc.
- Investigate the provision of public toilets or a link to the Gowrie's facilities.
- The pathway between the Gowrie and the central playground was noted as an undesirable area. Investigate opportunities create a more pedestrian friendly space. Suggested opportunities include improving blank wall via art or up lighting existing trees.

Accountability / Partnership

Facilitated by:

City of South Perth: Engineering Infrastructure / Community Culture & Recreation OR external consultant Landscape Architect / Community Development Coordinator

Input:

- City of South Perth
- KIT
- Opportunity for collaboration with Curtin Primary School, Aboriginal Community

Engagement Phase
Masterplan Workshop



Timeline



Example of multiuse / playground area. Path forms strong edge treatment between areas



Example of BBQ

Example Page

The following precedent images and indicative plan are illustrative suggestions to start the design investigation / discussion.

Please note, outcomes should respond to the project principles. This will ensure outcomes are appropriate and unique to Karawara.

Potential location for fenced community garden

Additional play opportunities for all ages play or themed / adventure playground

Central meeting point; shade structures, BBQ, seating and hardstand

Existing playground

Open kick about area

Youth hang out area



Figure 21: Schematic concept plan of central playground area



Example of integration of Noongar theming into central playground, landscape elements etc



Example of timber playground



Example of artistic pathway opportunity



Example of shaded seating area.



Example of opportunity for themed or adventure playground

Vision;

'working together to strengthen Karawara's public open space and community character'.

Project Principle:

Building on Karawara Character

Retain, enhance and actively build upon local spatial character attributes and seek to build upon the growing community capacity (pride) 'its about the people, not about the fences... we need to change the culture'



Accountability / Partnership

Facilitated by:

City of South Perth: Community Culture & Recreation: Community Development Coordinator

Input:

Formation of the Karawara Implementation Team (KIT)

Collaborate with the existing groups within the community to utilise existing information sources;

- City of South Perth
- ARROK Residents association
- Curtin University
- Waterford Plaza
- Aboriginal Community
- The Gowrie
- Local sporting clubs

Project 3:
Foster community initiatives

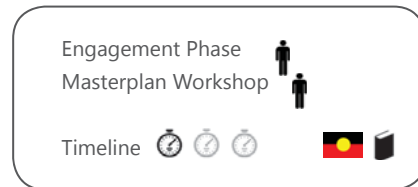
Brief

Seek to build upon the growing community capacity (pride) in Karawara by fostering community initiatives such as; programme of community events; community notice board; and, welcome pack for new residents.

Methodology

Establishment of the Karawara Implementation Team (KIT)

It is suggested that community initiatives should be led by a **Karawara Implementation Team (KIT)**. KIT should include representatives from City of South Perth, associated stakeholder groups, community bodies and residents to reflect the broader demographic of Karawara. The role of KIT is to advise on and coordinate the agreed community actions. Suggested actions include:



Wadumbah dance group



Example of a community noticeboard

1. Facilitate a program / or calendar of events in partnership with Waterford Plaza Centre Management. Events could be held in the internal Waterford Plaza 'main street' or on the rooftop carpark.

Possible events may include:

- Start of year events linked to University timetable to welcome students to Karawara
- Dance Performance by Wadumbah Aboriginal Group;
- Celebrate NAIDOC week (National Aborigines and Islanders Day Observance Committee);
- Monthly Sunday market or farmers market;
- Christmas carols / carols by candle light on rooftop of Waterford Plaza; and,
- Annual local school concerts and key events.

2. Facilitate the preparation of the Karawara welcome pack & Karawara newsletter

Karawara welcome pack could be sent out to new and existing residents and new students to the area. Karawara Welcome Pack may include a range of information; such as:

- Map of Karawara;
- Karawara Heritage & Cultural Information;
- Curtin University facilities;
- CoSP events, verge pickup days etc;
- Local fauna and flora info;
- Local sports areas and events;
- Regular community events; and,
- Karawara and surrounding suburb assets walks, public services and community gathering spaces.



Example of welcome pack



Example of bus stop vege patch



Example of bus stop library



Example of community noticeboards

Form of communication

- KIT to liaise with CoSP to include Karawara Welcome Pack and / or updates on City of South Perth website
- Printed newsletter which can be picked up from community buildings, Waterford Plaza, Bus Stops, IGA, George Burnett Leisure Centre, The Gowrie etc
- Community notice board – Potential locations raised include central playground area or existing services block wall on Walanna Drive

Precedents

Crestwood Estate in Thornlie is a good precedent welcome pack and is a useful starting point to review (http://crestwood.org.au/new_owners.html).

3. Community construction process to build relationships Opportunity to continue the Community Herb Garden and hold further community construction projects to continue to empower people to take control of their neighbourhood.

Suggested project opportunities:

- Reclaim public open space in the medium density Radburn area by planting productive gardens and fruit trees (See project 13)
- 'Adopt your neighbour bus stop' Reinvigorate bus stop with newsletter / welcome packs etc, small herb garden, swings, hopscotch etc)

For inspiration: see 'Spontaneous Interventions: design actions for the common ground' <http://www.spontaneousinterventions.org/interventions>

Example Page

The following precedent images and indicative plan are illustrative suggestions to start the design investigation / discussion.

Please note, outcomes should respond to the project principles. This will ensure outcomes are appropriate and unique to Karawara.

Vision;

'working together to strengthen Karawara's public open space and community character'.

**Project Principle:
Connectivity**

Seek to retain and enhance existing important linkages throughout Karawara and to adjoining suburbs...



Project: 04

Improve the pedestrian experience between Karawara and Waterford plaza

Brief

Waterford Plaza is a neighbourhood commercial centre which is designed to draw personnel from surrounding suburbs. Therefore the centre predominantly addresses Kent St and Manning Road. This project provides an opportunity to improve the connections between Waterford Plaza and Karawara and build upon this destination point to provide a 'gateway' into Karawara.

Methodology

1. **Quick Win** - Provide opportunities to incorporate artwork on utility services wall (or community notice board – Project 03) in collaboration with Aboriginal group or local artist.
2. Develop shared use zone and create pedestrian scaled spaces along Walanna Drive. The following could be explored as a techniques for achieving this:
 - Installation of island medians with planting and safe crossing points;
 - Provision of on street parking and planting bed;
 - Addition of textured vehicle surface to signify change of speed;
 - Create a clear and legible footpath network;
 - Improved signage for traffic and pedestrian movement; and,
 - Review vehicular entrance into and out of shopping centre.
3. Improve connection to underpass, student residential accommodation, Curtin University by provide a continuous path network along existing routes etc.
4. Investigate shared community space located within Waterford Plaza for multipurpose activities. The Aboriginal community supported this idea, and suggested the space should equip younger generations with skills (arts, craft, social skills, play opportunities, practical skills and supportive mentoring) and be a place that is inclusive to all Karawara community members.

Alternatively, investigate opportunity of Waterford Plaza leading a 'program of events' drawing of the capacity of surrounding community. (refer to Project 03)
5. Encourage nearby student residential accommodation to utilise Waterford Plaza carpark by and Curtin University outside shopping hours, to minimise congestion of vehicular areas around student housing.

Accountability / Partnership

Facilitated by:

City of South Perth: Engineering Infrastructure
Landscape Architect

Input:

- City of South Perth
- Waterford Plaza Centre Management
- KIT
- Main Roads
- Curtin University and Student Residence (Erica Underwood House & Guild Housing)

Engagement Phase
Masterplan Workshop



Timeline



Example Page

The following precedent images and indicative plan are illustrative suggestions to start the design investigation / discussion.

Please note, outcomes should respond to the project principles. This will ensure outcomes are appropriate and unique to Karawara.



Example: Street upgrade - before



Example of shared space (pedestrian / vehicles)



Example: Street upgrade - after



Example of technique to incorporate aboriginal art into Waterford Plaza and improve existing concrete balls



Example of pop street event space



Figure 22: Schematic concept of connection between Waterford Plaza and Karawara

Vision;

'working together to strengthen Karawara's public open space and community character'.

Project Principle: Connectivity

Seek to retain and enhance existing important linkages throughout Karawara and to adjoining suburbs...



Accountability / Partnership

Facilitated by:

City of South Perth: Engineering Infrastructure
Position: Infrastructure Planning

Input:

- KIT
- City of South Perth
- Partnering body; Aboriginal community, local schools, local artists

Project 05 :

Increase connection between student residences, Curtin University and Karawara

Brief

Close proximity to Curtin University, Waterford Plaza and transport links are significant assets for the suburb of Karawara.

This project creates an opportunity to strengthen this connection and turn the presumed transient nature of university students into long lasting connections with the suburb. This could be achieved by increasing two way communications between the university and the wider community, promoting awareness of Curtin University facilities and by providing improved physical links.

Methodology

In order to increase the two way communications between student residences, Curtin University and Karawara, the following agreed opportunities have been identified:

1. Foster partnerships between KIT, City of South Perth, Curtin University and Student residences.
2. Increase two way communications between the University and Karawara community. Possible mediums to increase communication include:
 - Provide updates on the City of South Perth, Curtin University websites, Peninsular magazine etc;
 - Include interested community members on regular emails updates, advertising events, seminars, etc; and,
 - Provide students with Karawara welcome pack / newsletter (See Project: 03).
3. Increase Karawara community's awareness of facilities available at Curtin University E.g. access to open seminars, resources, materials, newspapers, gym, fitness classes etc.
4. Provide opportunities for students to present research / studies to the wider Karawara community.

Although there is close proximity between Karawara, Waterford Plaza and Curtin University, Kent Street presents a major barrier between destination points. There is opportunity to improve physical connection through the following:

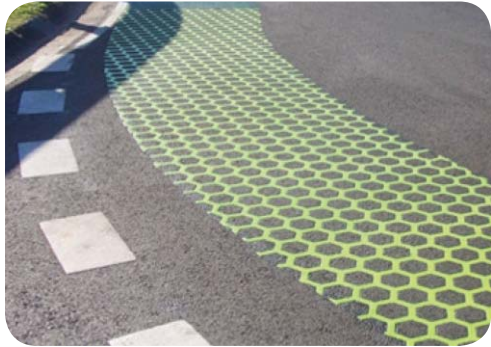
1. Create dialogue between Curtin University, student residences, City of South Perth, Town of Victoria Park and Karawara residents to work together on a joint attempt to reduce Kent St barrier.
2. Review and improve footpath network along known routes with consideration of future planning. (Curtin City Master Plan and Development Framework)
3. Determine location for pedestrian crossing between Karawara and Curtin University.

Engagement Phase
Masterplan Workshop



Timeline





Example path way finding to improve legibility

Example Page
The following precedent images and indicative plan are illustrative suggestions to start the design investigation / discussion.

Please note, outcomes should respond to the project principles. This will ensure outcomes are appropriate and unique to Karawara.



Opportunity for students to present research to the community



Example of facilities at Curtin University



Investigate locations for pedestrian crossing to reduce Kent Street barrier

Proposed path network

Create pedestrian scale spaces and accentuate desire line

Reinvigorate underpass

Waterford Plaza

Figure 23: Schematic concept of connection between Waterford Plaza, Curtin University and Karawara

Vision;

'working together to strengthen Karawara's public open space and community character'.

Project Principle:

Connectivity

Seek to retain and enhance existing important linkages throughout Karawara and to adjoining suburbs...



Project 06 :

Improve way finding strategy (signage), heritage interpretation and Noongar naming

Brief

This project provides an opportunity to improve legibility, as well as providing understanding of the areas rich cultural, planning and heritage value.

Methodology

1. Determine if a way finding strategy already exists within City of South Perth.
2. Quick Win - Investigate use of existing lighting poles within public open space for installation of signage – Precedent project, Crestwood Estate, Thornlie. This could be done as a short term alternative to undertaking the following way finding and heritage interpretation strategy.
3. Develop a way finding and heritage interpretation strategy:
 - Identify the purpose of the way finding signage (direction, informative, heritage and/or cultural value, connection to street signage, destination points, transport links and surrounding suburb linkages etc);
 - Develop agreed signage principals;
 - Investigate partnering opportunities e.g. Local artist, Aboriginal community.
4. Undertake detailed concept design of proposed signage including; purpose, location, content, graphics, materials, implementation program and estimate costs.

Accountability / Partnership

Facilitated by:

City of South Perth: Community Culture & Recreation / Engineering Infrastructure
Community Development Coordinator / Landscape Architect

Input:

- KIT
- City of South Perth
- Partnering organisations; Aboriginal community, local schools, local artists

Engagement Phase
Masterplan Workshop



Timeline



Example of Noongar art poles

Example Page

The following precedent images and indicative plan are illustrative suggestions to start the design investigation / discussion.

Please note, outcomes should respond to the project principles. This will ensure outcomes are appropriate and unique to Karawara.



Example path way finding to improve legibility



Crestwood example - signage on existing light poles



Signage example



Example of interpretative signage - Point Fraser

Way finding at entrance of greenways

Way finding off Gillon Street



Figure 24: Indicative example of way finding with greenways

Vision;

'working together to strengthen Karawara's public open space and community character'.

Project Principle:

Building on Karawara Character

Retain, enhance and actively build upon local spatial character attributes and seek to build upon the growing community capacity (pride) 'its about the people, not about the fences... we need to change the culture'



Accountability / Partnership

Facilitated by:

City of South Perth:
Engineering Infrastructure Landscape Architect

Input:

- KIT subcommittee
- City of South Perth
- Karawara residents

**Project 07 :
Increase native habitats**

Brief

Karawara is characterised by its extensive open space, prominent trees and remnant areas of native habitat.

This character is embedded in the cultural heritage of the area with Karawara meaning "Green" in local Aboriginal language, and the area originally being banksia woodland. The brief of this project is to increase native habitat throughout Karawara ensuring continued habitat for local fauna and increasing the amount and diversity of local flora. A prominent and healthy local ecology sustains biodiversity, improves amenity and provides a unique aesthetic to the area.

Methodology

1. Retain, improve and protect existing canopy trees. It is recommended that the base of trees is mulched to drip line of canopy with a shade edge finish. Alternatively under plant with native low grasses, shrubs and groundcovers. This will assist in minimising lawn area and reduce maintenance input requirements.
2. Develop subcommittee of KIT who can work with the City of South Perth Landscape Architect and maintenance team to plan, locate and implement planting. The purpose of this group, ignited by a common interest in native habitat, is to foster new relationships while learning about the local Karawara environment. Its encouraged that the group could contribute to the management and maintenance by taking ownership of a small native planting area.
3. After the subcommittee is formed, the suggested method to plan, locate and implement native planting is:
 - Undertake an investigation on appropriate locations (refer to context plan for suggested possible locations);
 - Select location and undertake design process; site analysis, opportunities and directions planning and concept design;
 - Select suitable plant species. City of South Perth's preferred planting palette is local species, which are preferably native, as well as, water wise and low maintenance;

More information can be obtained from the 'Greening our Streets, Street Verge Landscape Guidelines 2012'. This resource has a good list of low plants (<75cm) suitable for streetscape and CPTED planting (<http://www.southperth.wa.gov.au/Documents/Services/Verges/Street-Verge-Landscape-Guidelines.pdf>)

An additional resource is the 'City of South Perth 'Street Tree Management Plan 2012';

- Prepare planting proposal sketch;
- Liaise with City of South Perth Landscape Architect and maintenance team on proposed sketch design, species selection etc;
- Investigate opportunity of community and or school planting days etc;
- In conjunction with City of South Perth, organise and contribute to implementation and ongoing maintenance (development of roster etc.

Engagement Phase

Masterplan Workshop



Timeline



4. Planting should comply with Crime Prevention Through Environmental Design (CEPTED) principles including;
 - a. Surveillance 'See and be seen' – maximise the potential of natural surveillance.
 - b. Legibility and 'way finding' – ensure people can navigate route with confidence.
 - c. Public vs private. Design and manage spaces to define a clear boundary between public / private without a loss of natural surveillance e.g. solid fence.
 - d. Ownership. Design for pride, social interaction and community ownership.
 - e. Management. Design of low maintenance, practical and robust spaces without jeopardising aesthetic and functional qualities. Ensure basic maintenance and management of physical assets.

(Reference: CPTED | Guidelines for Queensland, Queensland Government, 2007 - <http://www.police.qld.gov.au/Resources/Internet/programs/cscp/safetyPublic/documents/CPTED%20Part%20B.pdf>)

5. Building on existing City of South Perth resources, develop an appropriate planting list including species, size, attributes, fauna attracting, education and cultural value etc and distribute to interested Karawara residents and stakeholders, or include in Karawara welcome pack and / or newsletter (See project 03).

Example Page

The following precedent images and indicative plan are illustrative suggestions to start the design investigation / discussion.

Please note, outcomes should respond to the project principles. This will ensure outcomes are appropriate and unique to Karawara.



Crestwood example - Mulch under existing trees



Crestwood example - Path to define edge treatment between lawn and garden bed



Open lawn area

Supplementary low native planting around the base of existing trees and to defined edge treatment (path)

Opportunity for rest and contemplation nodes along pedestrian path

Figure 25: Indicative example of native planting within the greenway

Vision;

'working together to strengthen Karawara's public open space and community character'.

Project Principle:

Amenity

To incorporate amenity that reflects the landscape character and offers diversity of multiuse areas, to foster community interaction...



Accountability/Partnerships

Facilitated by:

City of South Perth:
Engineering Infrastructure
Position: Landscape Architect

Input:

- KIT
- City of South Perth
- Meath Care / Curtin Primary School / Moorditj Keila

Project 08 :

Improve amenity at secondary hubs at: Curtin underpass and 'gateways' into greenways

Brief

During the master plan workshop an agreed hierarchy of public open space throughout Karawara was suggested.

This includes;

- 1) Build upon central playground, and activate as a multi-use / community meeting point (See key priority 02)
- 2) Increase amenity at secondary hubs; Curtin underpass and gateways to greenways
- 3) Low treatment amenity through all other public open space areas including rest and contemplation areas (See key priority 01)

In line with this public open space hierarchy, the brief of this project is to provide amenity at secondary hubs such as; fitness nodes, street furniture, possible pop up café or mobile food van, as well as creating a welcoming and unique entrance to the public open space.

Methodology

1. City of South Perth or an external consultant to undertake design review of the secondary hubs including the Curtin underpass and two gateways into the greenways in the western precinct of Karawara. The design review may include the three sites concurrently or sequentially depending on available budget and resources.
2. The recommended design process is to undertake;
 - Site analysis
 - Opportunities and directions analysis
 - Concept design
3. Suggested design considerations include;
 - Opportunity to integrate fitness equipment or small nature play obstacle course (develop physical skills) into western gateway and provide connection between Meath Care, Curtin Primary School and Karawara
 - Opportunity to plan 'pop up cafes or mobile food van.' This could be run once a month to foster community interaction. Investigate opportunities to align with local IGA or Moorditj Keila to provide cultural and education value etc.

Engagement Phase

Masterplan Workshop

Timeline





Example of pop up cafe



Example of informal seating area



Example of obstacle course play opportunity

Example Page

The following precedent images and indicative plan are illustrative suggestions to start the design investigation / discussion.

Please note, outcomes should respond to the project principles. This will ensure outcomes are appropriate and unique to Karawara.

- Fitness node* —————
- Hardstand area with shade and seating* —————
- Possible pop up food van or cafe* —————
- Possible way finding strategy* —————
- Street trees to link to central playground and George Burnett Park* —————

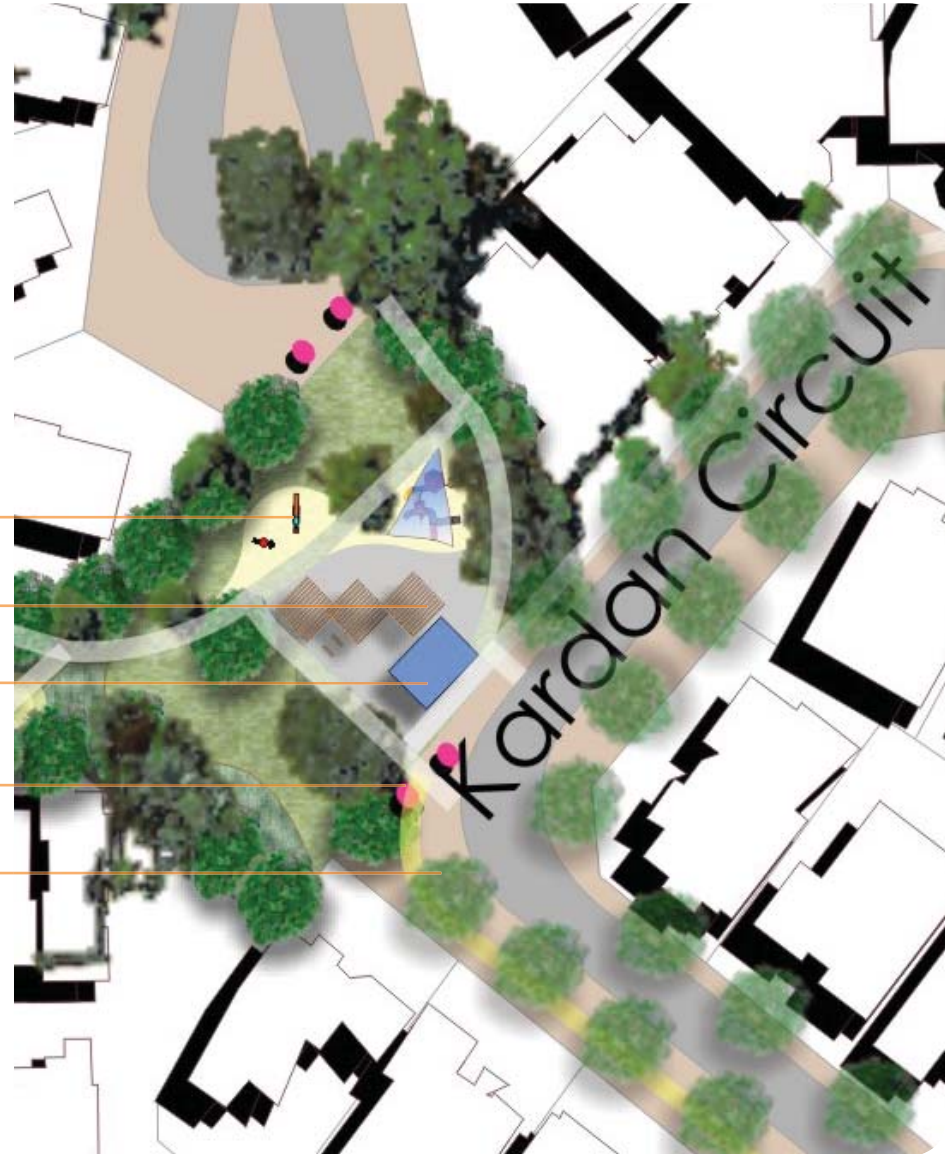


Figure 26: Indicative schematic plan of gateway to greenways

Vision;

'working together to strengthen Karawara's public open space and community character'.

Project Principle:

Building on Karawara Character
Retain, enhance and actively build upon local spatial character attributes and seek to build upon the growing community capacity (pride) 'its about the people, not about the fences... we need to change the culture'



Accountability/Partnerships

Facilitated by:

City of South Perth:
 Community Culture & Recreation
 Community Development Coordinator

Partnerships:

- Karawara Aboriginal Community
- City of South Perth
- Department of Housing
- Karawara community

Priority Task 9 :

Recognise the aboriginal community and heritage in Karawara

Brief

The brief of this project is to work together to strengthen recognition of the Aboriginal community as a visible, inclusive and supported part of the broader Karawara community.

Methodology

The following list provides steps towards strengthening this recognition;

1. Building capacity

- Encourage a representative from the Aboriginal community to be part of the KIT. Their role is to act as a communication conduit between the Karawara Implementation Team and Aboriginal Community to ensure the needs, values and concerns are heard.
- Within the Aboriginal community are existing 'community champions' who both; have the capacity to, and already are representing their communities. The work of these role models should be acknowledged, celebrated and supported. (See project 03 – community initiatives)

2. Design considerations

- Integrate Noongar naming into buildings, organisations, roads, signage, way finding etc. (See key priority 06)

City of South Perth Aboriginal Engagement Strategy 2012

Continue and build upon the collaborative work between City of South Perth Community Development Team and the Aboriginal community, including Indigenous Engagement Strategy Working Group. Relevant conditions include;

- 1.1.8 - Include Aboriginal design/art/names in new buildings and upgrading within the City of South Perth).
- 1.1.9 – Develop a reference working group comprising of Noongar / Bibbulmun people to continue consultation, engagement, knowledge & information sharing and learning.
- 1.1.10 – Include Aboriginal / Noongar / Bibbulmun design / art/ names for plants and landscaping within City of South Perth in / around public buildings, parks, reserves and other City of South Perth managed areas and projects (e.g. Karawara revitalisation).
- 3.1.4 – Nurture and develop natural spaces and reduce impacts on the environment through increased understanding of land and country and the unique relationship between people, flora and fauna.
- 4.3.1 – Install signage in Noongar language on areas of importance and significance including parks, reserves, etc.

Engagement Phase
 Masterplan Workshop



Timeline



3. Strengthening relationships

- Continue to focus on strengthening relationships between City of South Perth, Karawara community, the Aboriginal Community and Department of Housing. By focusing on good relationships the collective team will become better placed to drive positive change in areas such as housing, employment, health and wellbeing, recognition and respect, and participation within the Karawara community.

Example Page

The following precedent images and indicative plan are illustrative suggestions to start the design investigation / discussion.

Please note, outcomes should respond to the project principles. This will ensure outcomes are appropriate and unique to Karawara.



Possible aboriginal artwork that could be incorporated into Waterford Plaza



Yagan Memorial Park Sculpture



Celebrate local artists and performers - Wadumbah Dance Group and Moorditj Keila fashion parade and performance

Vision;

'working together to strengthen Karawara's public open space and community character'.

Project Principle:

Safety and security

Continue to build upon developing a safe and welcoming environment



Project 10 :

Test the closure of pedestrian access from Gillion Street and Jackson Road through temporary fencing

Brief

This project draws on Crestwood Estate in Thornlie as a precedent project. An important design feature of Crestwood Estate is that pedestrian access into the public open space is restricted to 10 public access points across 7ha of public open space. Controlled access points allow natural surveillance, increased security and resident ownership of public open space, which in turn creates spaces, which feel private and protected.

This projects aims to replicate this learning from Crestwood Estate and test the closure of pedestrian access ways from Gillion Street and Jackson Road through temporary fencing. Please note pedestrians are still able to access the central greenway through the pedestrian access way at the end of the adjacent cul de sacs.

Methodology

Quick win: Test the closure of one pedestrian access way (PAW) from either Gillion Street or Jackson Road.

Suggested steps to complete the project:

1. Find a group of neighbours who are willing to come together and test the closure of their pedestrian access way.
2. Hold a meeting with residents adjacent to the suggested PAW closure and discuss:
 - The purpose of the project;
 - Review of Crestwood Estate to assist understanding of principles including natural surveillance and increased security which can lead to private and protected public open space;
 - Encourage ownership of public open space finger to improve amenity;
 - Note that pedestrian access will be provided through adjacent cul de sac. Therefore it's important that residents restrict parking on verges to ensure clear view lines and allow pedestrians to walk on lawn verges rather than road.
 - Determined if there is agreement between residents to carry out test closure of PAW and what is an appropriate monitoring timeframe e.g. 6 – 12 months.
3. Install permeable fencing at either end of the PAW. Recommended fencing type is 1.8m high black pool fencing.
4. Encourage ownership of greenway fingers
 - Implement quick wins that can assist to promote community interaction in fingers E.g. Small native planting project, plant a lemon tree, encourage neighbours to pull out table and chairs during the weekend, assist and contribute to maintenance to create more useable public open space.
 - Refer to CPTED principles outlined in Key Priority 07 – Natural Surveillance, Public / Private, Legibility, Ownership and Management.
5. After 6 or 12 month monitoring period, if successful results occur implement similar PAW closures as a staged process. It is recommended that closures are aligned with a group of neighbouring residents who agree to and support the process and opportunity to strengthen ownership over public open space.

Accountability/Partnerships

Facilitated by:

Group of neighbourhood residents
City of South Perth
Department: Development Services
Senior Strategic Projects Planner

Input:

- KIT
- Karawara residents
- City of South Perth

Engagement Phase

Masterplan Workshop



Timeline





Figure 27: Photo of existing greenway finger extending to pedestrian access way

Example Page

The photo montage below is an illustrative suggestion only to start the design investigation / discussion.

Please note, outcomes should respond to the project principles. This will ensure outcomes are appropriate and unique to Karawara.



Figure 28: Photo montage of permeable fencing, supplementary canopy trees, low planting or mulch under existing trees

Permeable fence

Supplementary tree and under storey planting

Mulch under existing tree

Vision;

'working together to strengthen Karawara's public open space and community character'.

Project Principle:

Safety and security

Continue to build upon developing a safe and welcoming environment



Accountability/Partnerships

Facilitated by:

KIT / Karawara residents and City of South Perth:
Development Service
Position: Senior Strategic Project Planner

Input:

- Karawara residents
- KIT
- City of South Perth Landscape Architect
- Department of Housing

Priority Task 11 :

Investigate the opportunity to incorporate permeable fencing

Brief

The brief of this project is to increase permeable fencing throughout Karawara.

Over time the original Radburn principle of low, permeable fences and connection onto greenways, has altered through a change in social trends and demarcation of private property boundary by installing fencing.

Solid fences are territorially strong but provide no surveillance of public open space. Karawara now has the second lowest crime rate across suburbs within the City of South Perth. This reduction in crime rates should be supported through additional small changes that can ensure ongoing surveillance and ownership of public open space.

Methodology

Listed below are some starting suggestions of steps to achieving this project:

1. Recommended fencing method
 - The preferred fencing method is to allow visual connection between public and private interface. Preferred fencing options are:
 - Black pool fencing or Garrison fencing. Fencing could be installed 1.8m high to maintain security.
 - Low solid fences approximately 1.2m high. Many precedent examples of this fencing type can be seen in the south eastern medium density radburn area.
2. Develop an edge treatment along the boundary of the public / private areas.
 - Clear edge treatment e.g. path or garden bed to define maintenance edge
 - Use of planting to help soften boundary line

Opportunity for KIT or a KIT subcommittee or City of South Perth Landscape Architect to prepare a short information sheet that could be sent out to residents or displayed on community notice board. This may include:

 - Define principles
 - Schematic design ideas
 - Suitable native and exotic plants to grow in private property to help soften public / private interface
 - Research appropriate local fencing suppliers, installers and provide contact details on community notice board
3. Work with the Department of Housing (DoH) to develop strategy to increase permeable fencing adjoining public open space.
 - City of South Perth and the Department of Housing to investigate subsidy strategy to encourage and assist residents with the costs of installing permeable fencing.

Engagement Phase
Masterplan Workshop



Timeline



4. Team up with neighbours and get creative.
 - Install a gate? This adds interest, connection and promotes a friendly neighbourhood atmosphere to passers-by.
 - How can art / interest be incorporated into existing solid fences?
 - Consider substituting one or more solid fencing panels with permeable panels

Example Page

The following precedent images and indicative plan are illustrative suggestions to start the design investigation / discussion.

Please note, outcomes should respond to the project principles. This will ensure outcomes are appropriate and unique to Karawara.



Crestwood example - permeable fencing



Crestwood - mural along solid fence to create interest



Figure 29: Photo of existing Karawara greenways



Figure 30: Photo montage of permeable fencing along Karawara greenway

Vision;

'working together to strengthen Karawara's public open space and community character'.

Project Principle:

Safety and security

Continue to build upon developing a safe and welcoming environment



Project 12 :

Improve the Karawara underpasses. First priority is the underpass near Waterford Plaza and The Gowrie.

Brief

The existing underpass near Waterford Plaza has been noted as a 'scary' and unwelcoming space. Therefore the brief is to reinvigorate and strengthen circulation linkages between Karawara, Waterford Plaza and Curtin University.

The transformed underpass should continue to provide circulation for pedestrians, cyclists and disabled access between destination points.

Methodology

1. As the underpass is located in the road reserve between the Gowrie and Waterford Plaza and is managed by the City of South Perth, it is recommended that all parties are involved in the planning, implementation and management dialogue.
2. Undertake a design process to explore what is the best way to upgrade the underpass. The design process should include; site analysis, opportunities and directions and sketch design options. This review could be undertaken with, or aligned to project 04 – Improve pedestrian experience between Karawara and Waterford Plaza.
3. Three schematic suggestions have been developed from feedback during the Master Plan Workshops. Montages are schematic only and are intended to initiate ideas.

Accountability/ Partnerships

Facilitated by:

City of South Perth: Engineering Infrastructures
Landscape Architect

Input:

- City of South Perth
- The Gowrie
- Waterford Plaza Management
- Meath Care
- Local artist, local schools

Engagement Phase
Masterplan Workshop



Timeline



Example Page (opposite)

The following precedent images and indicative plan are illustrative suggestions to start the design investigation / discussion.

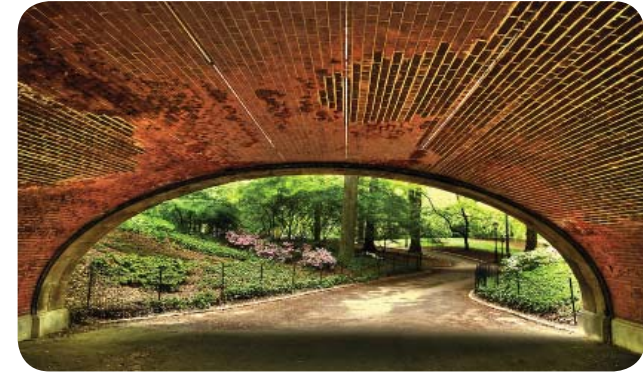
Please note, outcomes should respond to the project principles. This will ensure outcomes are appropriate and unique to Karawara.



Precedent image: Lighting opportunities



Precedent image: Underpass at Crestwood Estate



Example of underpass in Central Park, New York

SCHEMATIC 1:



Figure 31: Schematic 1

1. Use of lighting (art, sculptural, functional – to deter people from sitting in areas)
2. Upgrade to underpass to high quality landscape treatment e.g. face in Corten steel
3. Investigate substitution of clusters of rock work to support cascading planting.

SCHEMATIC 2:



Figure 32: Schematic 2

1. Remove seating to mitigate people mingling in the area
2. Create curve form on interior, paint white to open space and integrate local artwork, notice board
3. Reduce length of the approach path

SCHEMATIC 3:



Figure 33: Schematic 3

1. This option requires significant alteration. Investigate transformation of underpass to include new arch form that extends to the ground surface.
2. Removal of rock work to create sloping and cascading planting bed

Vision;

'working together to strengthen Karawara's public open space and community character'.

Project Principle:

Building on Karawara Character
Retain, enhance and actively build upon local spatial character attributes and seek to build upon the growing community capacity (pride) 'its about the people, not about the fences... we need to change the culture'



Accountability/Partnerships

Facilitated by:

KIT / Community Garden Subcommittee

Input:

- Karawara community
- Partnering organisations
- Aboriginal community
- City of South Perth

Project 13 : Develop a community garden

Brief

Throughout the Master Plan process a common theme arose of continuing to foster community and cohesion. The brief of this project is to encourage community interaction, increase edible plants within Karawara and develop a community garden to educate and spread knowledge of 'bush tucker'.

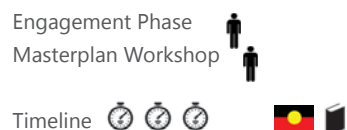
A pilot project, the Karawara Herb Garden is already underway. This was initiated during the engagement phase, and is to be installed along the Gowrie car park fence by a group of residents on the 28th of July, 2013. The herb garden is intended for community use in partnership with the Gowrie.

Methodology

A community garden is a shared space where people gather to grow produce collectively. The following points provide a starting step by step process to building a successful garden:

1. Identify a group and gauge levels of interest, support and commitment. The group could be two or three neighbours or a continuation of the Herb Garden Team;
2. Investigate partnerships (Curtin University, student residences, other community gardens, local businesses, Meath Age Care etc.);
3. Decide on a suitable site. Three potential locations have been nominated within the Master Plan including an area within the central playground meeting hub, vacant land west of The Gowrie car park, which is owned by Curtin University or 'pop up' neighbourhood productive gardens in the medium density radburn area;
4. Investigate funding opportunities through grants, sponsorship, community businesses, membership fee, other local institutions to promote shared facilities e.g. shed, water tank, collection of water off neighbouring roof, recycled materials, verge collection for outdoor seating etc. (community grants starting point: <http://www.daff.gov.au/agriculture-food/food/community-food-grants>);
5. Design and plan the garden;
6. Integrate cultural value through Aboriginal foods and bush tucker. Work with Aboriginal community to provide knowledge and education on species, uses, etc;
7. Organise and contribute to implementation;
8. Develop maintenance program; and:
9. Continued communication and community interaction.

This process could also be applied to other community build projects / pop up projects.



Inspiration from precedent projects;

Australian City Farms and Community Gardens Network. <http://communitygarden.org.au/>

Do Something! Foodwise Initiative. <http://foodwise.com.au/the-community-gardening-movement/>

Hulbert Street, Fremantle. The Painted Fish, Fremantle WA. <http://thepaintedfish.com.au/>

A guide for Community Organizations in Newfoundland and Labrador, Prepared by Food Security Network, 2011

The better block. <http://betterblock.org/>

Example Page

The following precedent images and indicative plan are illustrative suggestions to start the design investigation / discussion.

Please note, outcomes should respond to the project principles. This will ensure outcomes are appropriate and unique to Karawara.



Example of a use of Verge Vege patches.



Value of 'Bushtucker' garden for educational purposes



Example of community garden using recycled materials



Figure 34: Photo montage of permeable fencing along Karawara greenway

Vision;

'working together to strengthen Karawara's public open space and community character'.

Project Principle:

Safety and security

Continue to build upon developing a safe and welcoming environment



Project 14 :

Improve Karawara walking network including, pedestrian experience, safety, connection to surrounding suburbs, transport links etc

Brief

Karawara public open space is predominantly used for passive recreation including walking, cycling and leisure activities. The existing path and greenway network offer a series of walking circuits throughout the suburb.

There is opportunity to strengthen and enhance this existing network, by increasing the pedestrian experience, improve legibility and connection into neighbouring suburbs and to destination points.

Methodology

1. Identify and investigate destination points, linkages and surrounding suburb connections, which could link into the Karawara existing walking circuit.
2. Define a walking circuit / way finding strategy – see project 06. Opportunities include path texture/colour, signage, totem poles etc to denote walking circuit.
3. Integrate basic amenity such as seating, drinking fountains, lighting, street art and planting along the circuit. The location of basic amenity should be located based on a pedestrian walkable catchment evaluation. Provision of basic amenity at convenient distances will assist to provide interest, comfort and leisure along the walking circuit. (5 mins = 400m and 10mins = 800m).
4. Align lighting and footpath along Jackson Road and provide rest points.
5. Investigate opportunities to improve the North South pedestrian connection between the Karawara Village Greens precinct and central redevelopment area and playground. Opportunity to investigate removing fencing on the vacant lot on Kardan Circuit.
6. There is strong concern about the dangerous intersection at Walanna Drive and Jackson Road. The community preference is for a stop sign rather than a give way sign. KIT to liaise further with Main Roads to resolve issue.
7. Conduct lighting study and standards for upgrading existing lighting as required.

Accountability/Partnerships

Facilitated by:

City of South Perth:
Engineering Infrastructure
Landscape Architect

Input:

- KIT
- Karawara community
- City of South Perth

Engagement Phase
Masterplan Workshop



Timeline



Example Page

The following precedent images and indicative plan are illustrative suggestions to start the design investigation / discussion.

Please note, outcomes should respond to the project principles. This will ensure outcomes are appropriate and unique to Karawara.



Example of bollards to define pedestrian space



Example of signage to improve legibility



Example of welcome to country in paving treatment



Example of shared pedestrian space



Example of small garden bed along pedestrian journey



Example of feature lighting along pedestrian path

